



Sacramento Chapter
Volvo Club of America

**Sacramento Caravan to Portland, OR for RSI BBQ & IPD Garage Sale
Friday, May 18 - Saturday, May 19, 2012**

Hello everyone!

Mark Baldwin, Sac Volvo Club President, will be leading the caravan up to the Portland, OR festivities over the May 18-19th weekend.

All questions should be directed to Mark.

<u>Meeting location:</u>	<u>Meeting Time:</u>	<u>Cost:</u>
Starting Location: Mark's Shop. Contact Mark directly to RSVP and for directions.	Sacramento Caravan: Friday, May 18, 2012, ~4:00A (on the road by 5:00A)	TBD
Ending Location(s): RSI 8912 N.E. Vancouver Way Portland, OR 97211 ---and---	RSI BBQ: Friday, May 18, 2012, 6:00P	You may also want to factor some extra spending money in the budget for the IPD Volvo Garage Sale.
IPD 11744 NE Ainsworth Circle Portland, OR 97220	IPD: Saturday, May 19, 2012 Sale: 9:00A - 1:00P Car Show: 8:00A - 3:00P Swap Meet: 7:30A gates open; 3:00P booth cleared	Contact Mark for more details.
Google Map (will open in new tab/window)		

**To ask questions or RSVP, you can contact:
Mark Baldwin, SacVCOA President, at [*removed*](#)**

Event post is also available at the chapter website:
www.sacvolvoclub.org

Hope to see you there!

Mark Baldwin
[*removed*](#)

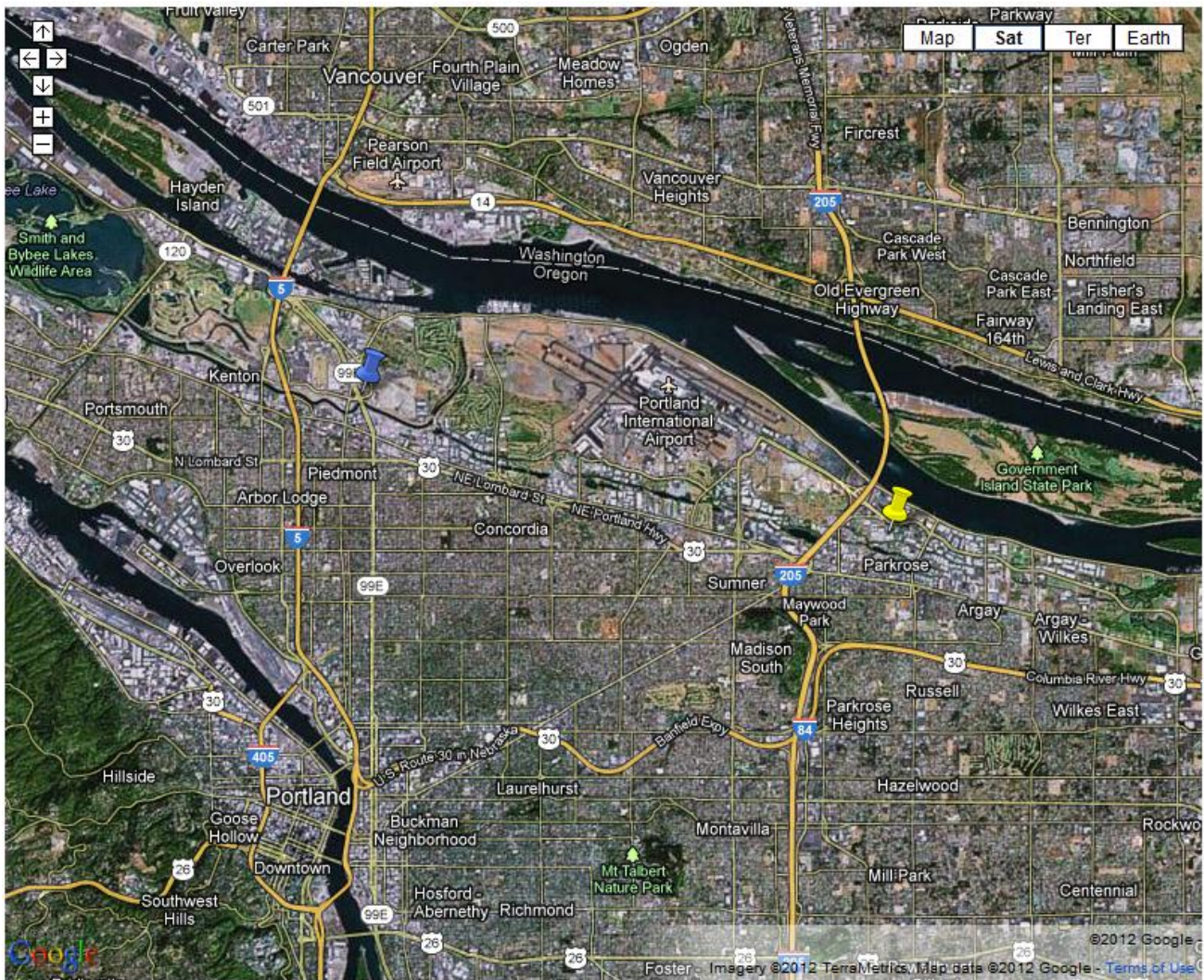
Sacramento President
[*removed*](#)



Sacramento Chapter
Volvo Club of America

Sacramento Caravan to Portland, OR for RSI BBQ & IPD Garage Sale
Friday, May 18 - Saturday, May 19, 2012

www.sacvolvoclub.org



RSI = Blue Push Pin
IPD = Yellow Push Pin

Interactive map and driving direction gadgets available on our website:

<http://www.sacvolvoclub.org/Home/events/event-flyer>

R-SPORT INTERNATIONAL

BBQ

Fri, May 18
6PM til ...
8912 NE Vancouver
Portland, OR 97211



Brews, Burgers, Volvos... the stuff that makes the world turn

<http://www.facebook.com/RSportInternational>



<http://www.ipdusa.com/blogs/234/2012-ipd-garage-sale-is-coming>

From IPD Volvo:

"May 19, 2012 is when the 29th Annual ipd Garage Sale, Swap Meet and Car Show will take place. We look forward to this event each year and we're excited to have games, prizes, giveaways, sale pricing on most of our stock and much more. Doors will open to the ipd sales desk from 9:00am until 1:00pm and the swap meet and car show has been extended to run until 3:00pm.

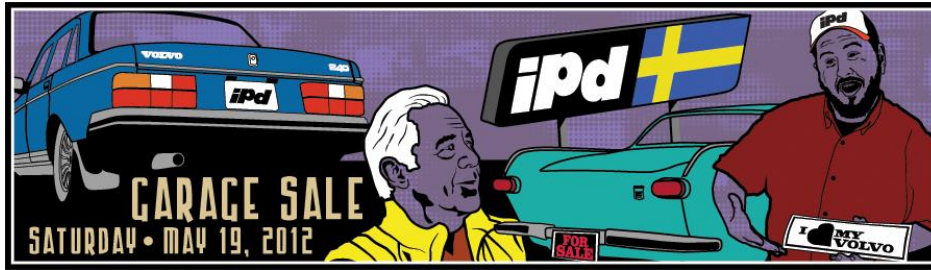
This year ipd partnered with CHAP (Childrens Healing Art Project). We worked with CHAP during 2011. With your help we hope to surpass the contributions from last year. ipd is very excited to work with all our customers to raise money for local charity organizations. For more information regarding CHAP, visit www.chap.name. We hope to see you here for this great event.

Garage Sale is 9:00am to 3:00pm Saturday May 19, 2012

To reserve a spot in the swap meet portion of the event to sell your parts call 800-444-6473.

If you have a restored, nice original or hotrod Volvo that sticks out from the crowd and would like to inquire about entering it into the car show portion of the event please email details to cameron@ipdusa.com

[RSVP on ipd's facebook event page](#)



<http://www.ipdusa.com/blogs/234/2012-ipd-garage-sale-is-coming>

IPD Schedule of Events

Main Events

Sale Counter Open 9-1

Swap Meet 9-3

Car Show 9-3

Other All Day Events

Music and games will be played all day throughout the event

Children Healing Art Projects (CHAP) will be available to talk more about their organization

7:30 - Swap meet set up begins - location: Adjacent parking lot on North side of Ainsworth Circle

8:00 - Show car entries arrive and begin set up

9:00 - Gates open to the public. Sale counter open for business.

10:45 - 11:30

- Tech Session - Pre Purchase Inspection -
Sponsored by Vol-Tech Independent Volvo Repair
location: ipd shop

11:45 - Heads or Tails Game

12:00 - Plinko

1:00 - Sale counter closed

1:00 - Raffle/Auction begins

2:00 - Voting for peoples choice ends

2:30 - Peoples choice award winner announced

3:00 - Swap meet and car show end

Other Important Information

People's choice ballots are available at front gate - ballot box will also be at front gate.

Door prize entries are available at front gate - door prize entry return box will be at front gate.

For further information please contact Chris Delano at chris@ipdusa.com"